

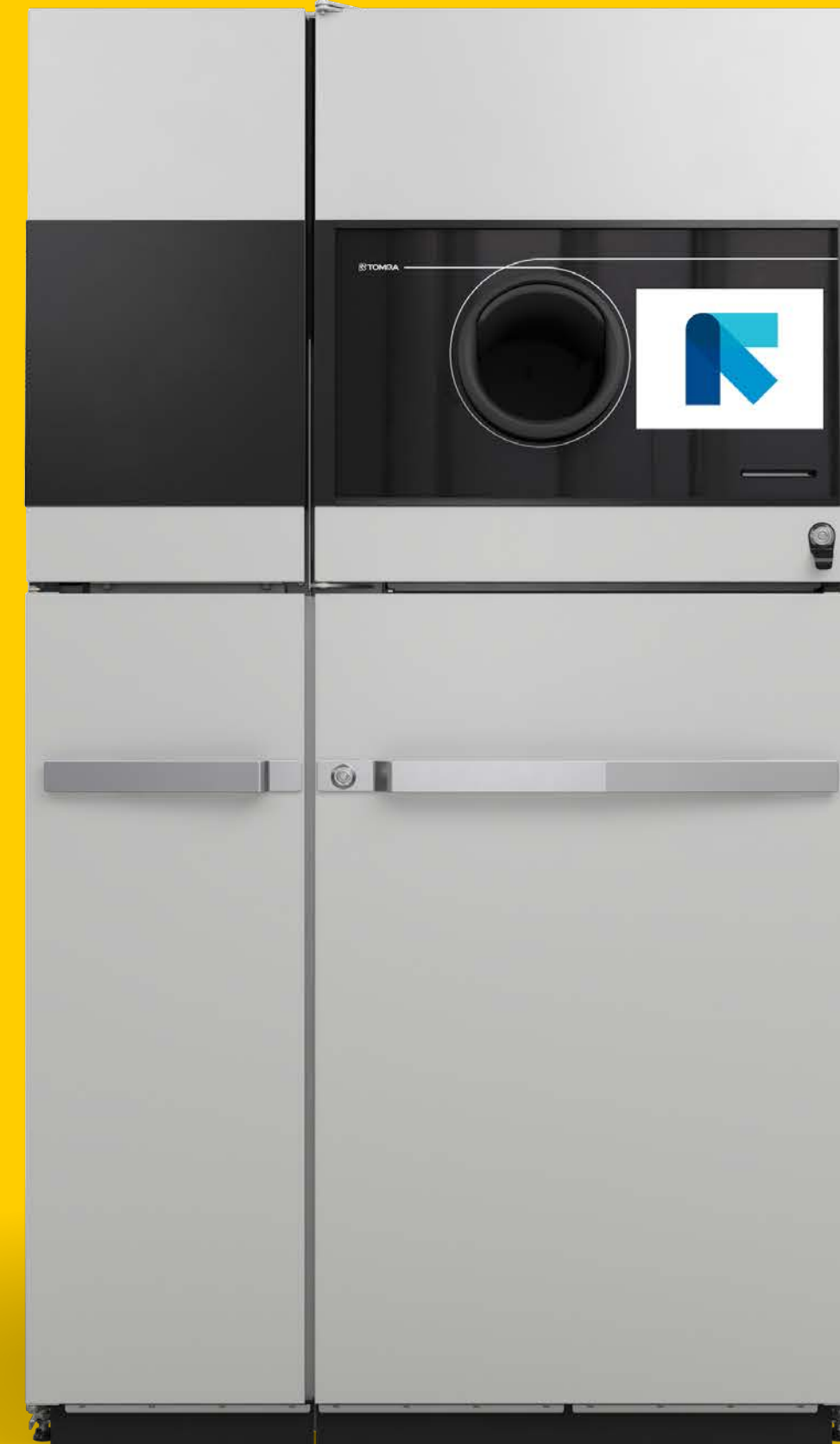


# M1

More compact than you think

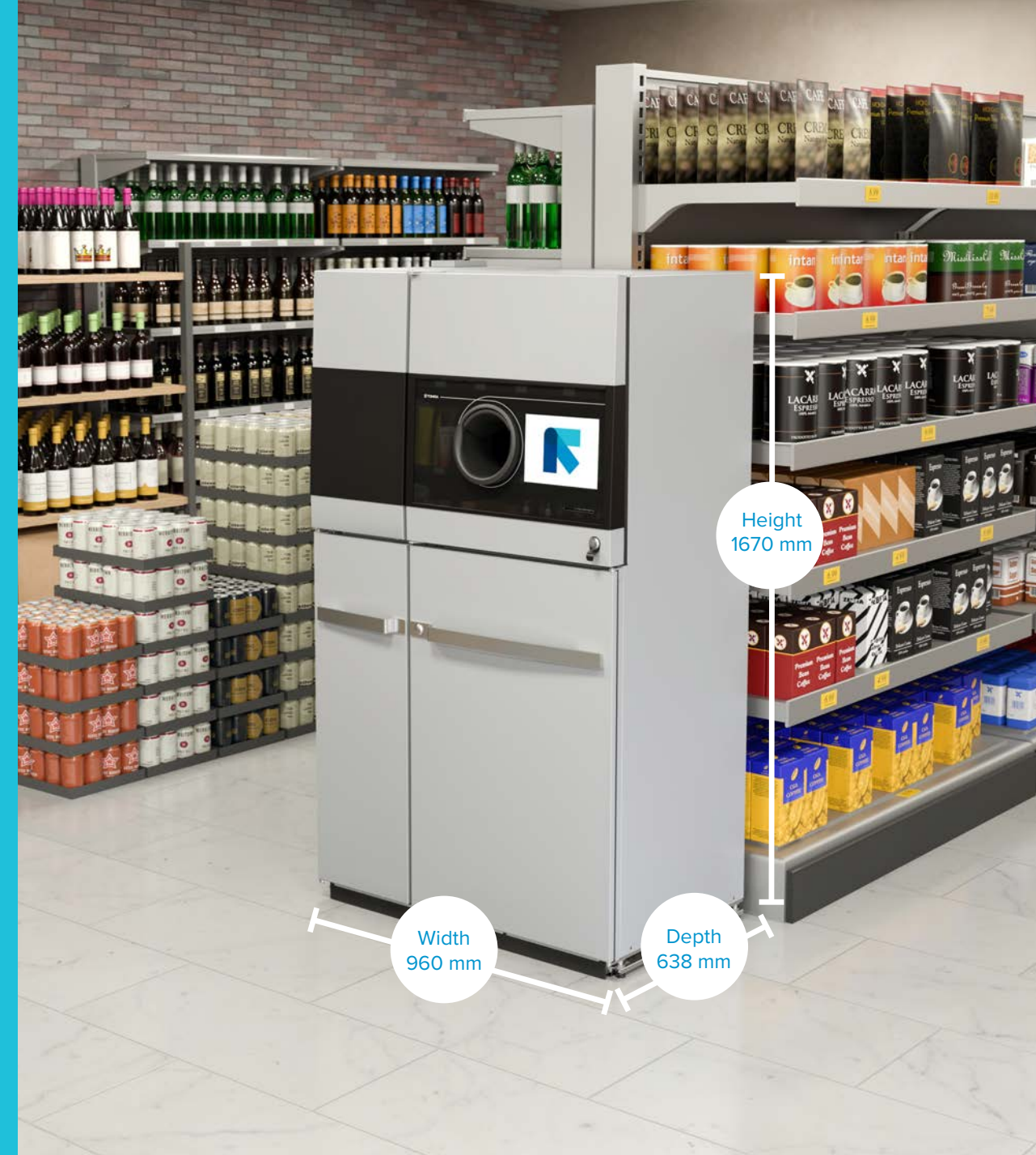


MINI LINE



## A seamless fit for your store

The smallest recycling solution on the market that can recognize, sort, and store glass, plastic, and aluminum containers. Designed to fit right in with your store's shelves, the TOMRA M1 requires just 0.61 sqm, making recycling possible in every store.



## Less time redeeming means more time shopping

Leave the work to the machine with its 360-degree, instant container recognition technology (TOMRA Flow™) so customers can get to their shopping faster.

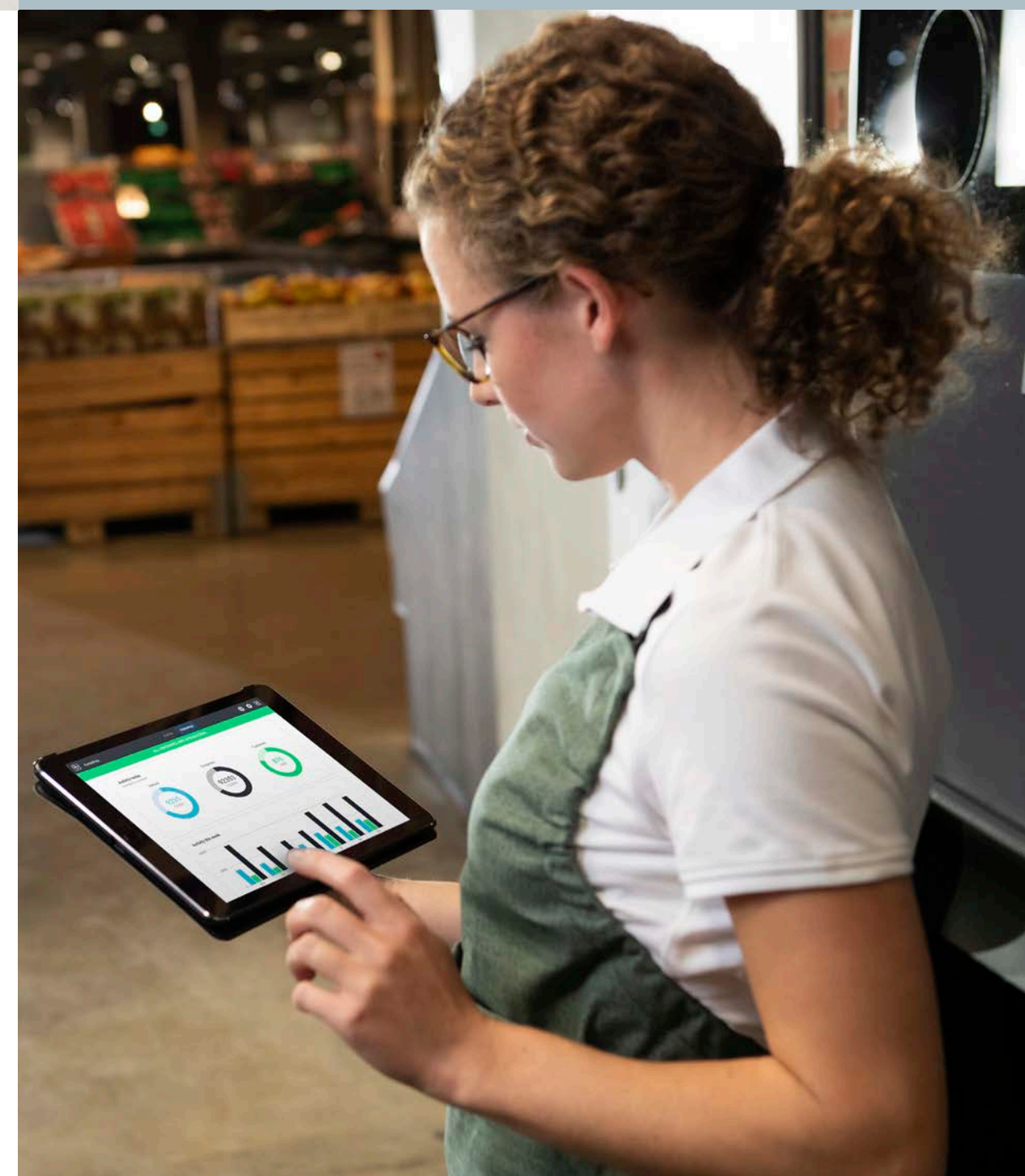


## Let the M1 handle recycling for you

With optimal storage space and on-screen, step-by-step cleaning instructions, this efficient and clean alternative to manual handling requires little time and attention, so you can focus on your store.



Scan here to see how to use the TOMRA M1



## Digital tools streamline your store operations

The TOMRA M1 is fully compatible with TOMRA's digital solutions to help you manage your machine with efficiency, improve uptime, and spend more time with your customers.

## Retailers help the world recycle

Deposit return systems (DRS) for beverage container recycling help keep valuable resources in a continuous loop of use and reuse. At TOMRA, we call this process Clean Loop Recycling.

As a retailer, you're at the heart of Clean Loop Recycling. You play a critical role at the point where consumers buy and return their containers.

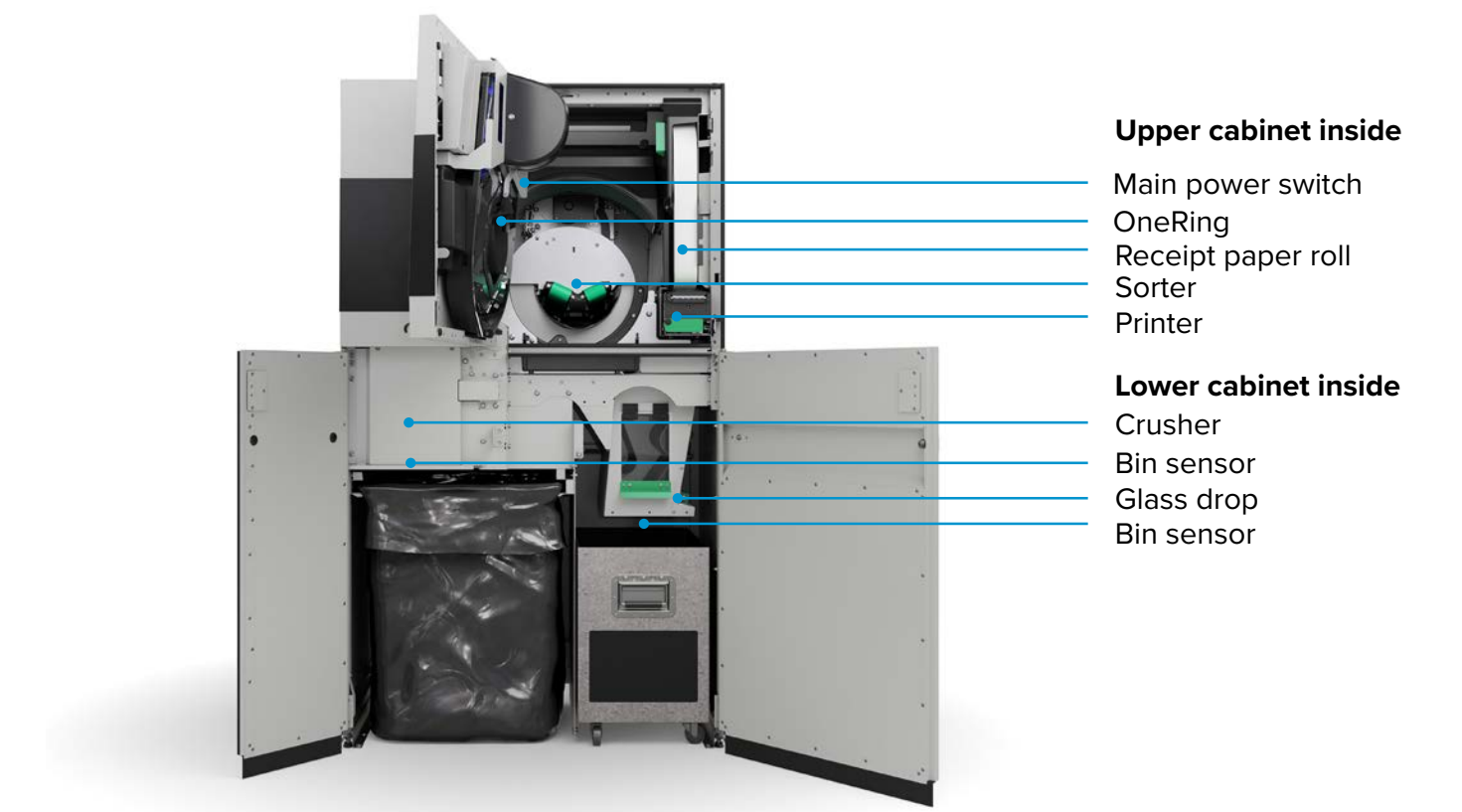
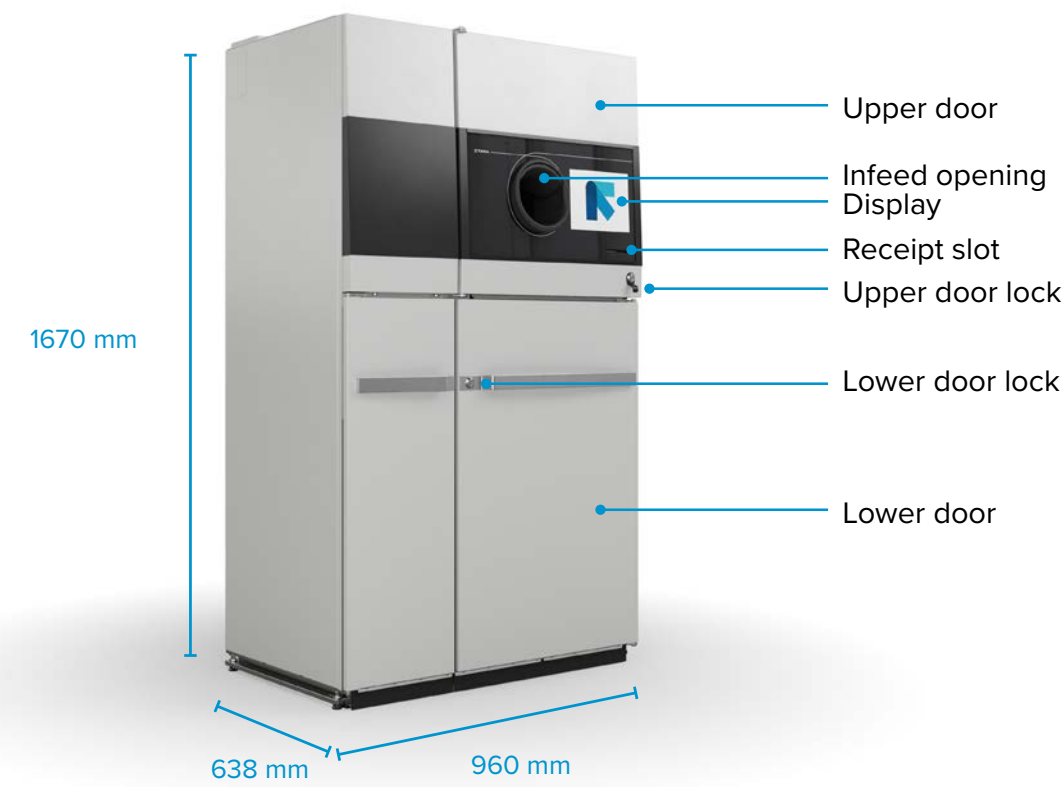


Let's put recycling to work for you

Choosing to partner with TOMRA means creating a **great recycling experience for your customers**, making a **smart investment for your store**, and choosing a solution that brings **peace of mind and excellent support for your operations**.

# TOMRA M1™

More compact than you think



## MEASUREMENTS\*

<b>Dimensions [W x D x H]</b>	960 mm x 638 mm x 1670 mm
<b>Infeed height</b>	1186 mm
<b>Adjustment range for height</b>	+/-10 mm
<b>Footprint</b>	0.61 sqm
<b>Weight</b>	305 kg

## STORAGE CAPACITY\*

<b>Accepted containers</b>	Up to 3 types of non-refillable containers: plastic bottles, cans and glass bottles
<b>Storage capacity per bin<sup>3</sup></b>	<b>PET bottles:</b> Up to 270 (compacted) <b>Cans:</b> Up to 550 (compacted) <b>Glass:</b> Up to 80
<b>Container sizes</b>	50-130 mm x 80-360 mm (D x H)

## CONNECTIVITY

<b>External IT interface</b>	LAN (Ethernet TCP/IP), POS compatible
<b>Digital tools</b>	Fully compatible with TOMRA's portfolio of digital products and APIs

\* May vary in different countries due to variations in beverage container materials, shapes and sizes.

<sup>1</sup> Bin model availability may vary.

<sup>2</sup> Performance data may vary across markets, deposit regulations and system requirements.

<sup>3</sup> Capacities will vary with object mix, type and system configuration.

## STANDARD CONFIGURATION\*

<b>Machine type</b>	Standalone reverse vending machine
<b>Bin unload direction</b>	Front unload
<b>Number of cabinets &amp; bins<sup>1</sup></b>	1 cabinet, 2 bins
<b>Compactors</b>	Mix crusher (cans, PET bottles), glass drop
<b>Colors</b>	RAL 7042 [possible to wrap machine for a custom look]
<b>User interface</b>	<b>Display:</b> 10,4" touch display, video and sound capabilities, user guidance on machine screen <b>Printer:</b> Thermal printer
<b>Optional configurations</b>	Loyalty card reader, Bag hook

## ENVIRONMENTAL

<b>Humidity</b>	Maximum 90% relative humidity, non-condensing
<b>Temperature</b>	+10°C to +40°C/ +50°F to 104°F (For indoor or protected installation only)
<b>Noise</b>	<72 dB (can/plastic), <83 dB (glass)

## RECOGNITION

<b>Recognition technology</b>	TOMRA Flow Technology™ (360° instant recognition, shape recognition, full container detection, barcode recognition, metal detection)
<b>Speed capability</b>	Up to 17 containers per minute <sup>2</sup>

## ELECTRICAL

<b>Power consumption</b>	Idle 57 W – Max. 3 kW
<b>Mains EU</b>	230V AC, one phase, 50Hz, 5.6A



Get in the Loop at [tomra.com/Collection](https://tomra.com/Collection)



**TOMRA CERTIFICATION**  
TOMRA SYSTEMS ASA has implemented and maintains a Quality and Environmental Management System which fulfils Nemko's provisions for Management System Certification and the requirements of standards NS-EN ISO 9001:2015 and NS-EN ISO 14001:2015, with the scope described by the organization on 2018-05-29. The certification covers the development and delivery of automated systems for recycling.



**LEGAL COMPLIANCE**  
The CE mark on this product confirms compliance with the following European Directives:  
2006/42/EU, Community Legislation on Machinery.  
2014/30/EU, Electromagnetic Compatibility (EMC).  
2011/65/EU, Restrictions of Hazardous Substance (RoHS).  
2012/19/EU, Waste Electrical and Electronic Equipment (WEEE).

We reserve the right to make changes to specifications without prior notice. While every effort has been made to ensure all information contained in this document is accurate, TOMRA assumes no liability for any errors, inaccuracies or omissions that may occur. All products and offers are subject to country availability. Please consider the environment before printing.

## TOMRA Collection

TOMRA Collection is part of the TOMRA Group, which is Leading the Resource Revolution by transforming how we obtain, use, and reuse our world's resources.

With over 82,000 installations across more than 60 markets, retailers and consumers around the world rely on our reverse vending machines to collect more than 45 billion used bottles and cans each year, which can be recycled into new containers.

Clean Loop Recycling is the easy and rewarding way to make choices that make change.

Get in the Loop at [tomra.com](https://www.tomra.com)

